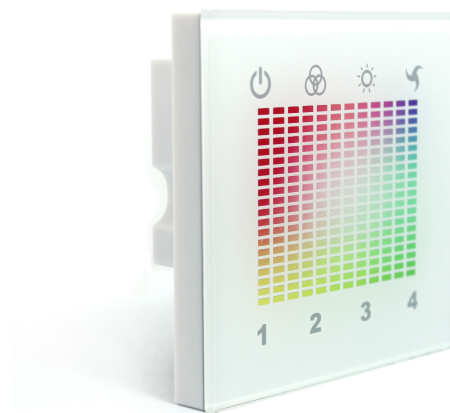




TM03 DMX Touch Panel Controller

Product Specifications





Contents

1. Summarization.....	2
2. Technical Parameters.....	2
3. External Dimension.....	2
4. Interface Specification.....	2
5. Controller instruction.....	3
6. Typical Application.....	4
7. Installation Method.....	4
8. Remarks.....	5



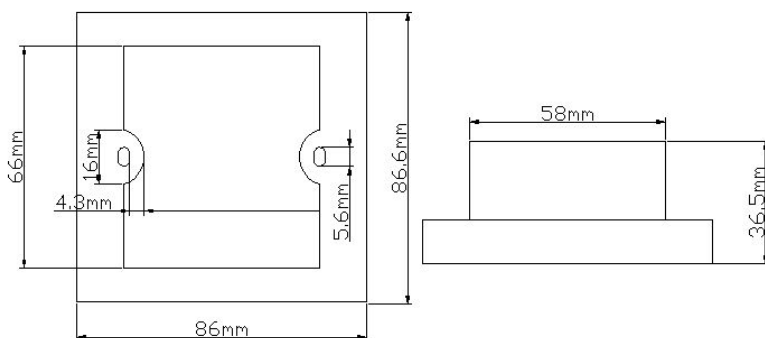
1. Summarization

DMX touchTouch panel controller is a new high-end controller which newly developed by our company.. It adopts glass panel design, is beautiful and fashionable in appearance. It adopts high precision capacitance touch control chip, increases the touch sensitivity, reduces trigger which caused by mistake. It is used for control of the DMX lamps. Easy to connect and use,also can realize jumpy changing,gradual changing, stroboflash and other effects of change.

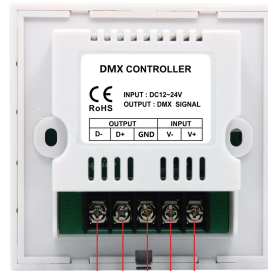
2. Technical Parameters

- 2.1 working temperature: $-20-60^{\circ}\text{C}$
- 2.2 supply voltage: DC12-24V
- 2.3 output: DMX signal
- 2.4 connection mode: DMX standard three-wire connection
- 2.5 packing size: L90 X W90 X H40 mm
- 2.6 net weight: 185g
- 2.7 gross weight: 215g
- 2.8 static power: $<1\text{W}$

3. External Dimension



4. Interface Specification



① ② ③ ④ ⑤

①output: D-

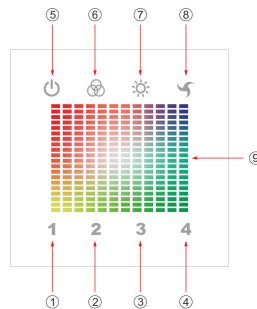
②output: D+

③ output: GND

④input: V-

⑤input: V+

5. Controller instruction



I、 key instruction

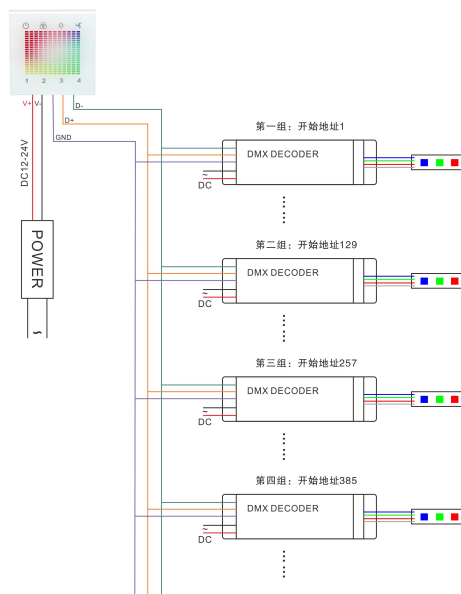
- ① press to choose the first group to control(DMX decoder address is 1 - 128)
- ② press to choose the second group to control(DMX decoder address is 129-256)
- ③ press to choose the third group to control(DMX decoder address is 257-384)
- ④ press to choose the fourth group to control(DMX decoder address is 385-512)
- ⑤ control switch of the current group
- ⑥ control model of the current group (21 mode total, button loop pattern is 1~21~1)
- ⑦ control the brightness of the current group(100 level total, button loop brightness level 1~100~1)
- ⑧ control the speed of the current group(100 class total, button loop Speed Class 1~100~1)
- ⑨ select the static color of current group, which is pressed

II、 controller mode choice change as follows:



No	Patterns	Remarks	No	Patterns	Remarks
1	Static red	Brightness is adjustable, Speed is unadjustable.	12	Red stroboflash	Speed and Brightness are adjustable
2	Static blue		13	Blue stroboflash	
3	Static purple		14	Purple stroboflash	
4	Static green		15	Green stroboflash	
5	Static yellow		16	Yellow stroboflash	
6	Static cyan		17	Cycan stroboflash	
7	Static white		18	White stroboflash	
8	Three-color jumpy changing	Speed and brightness are adjustable	19	R/B crossfade	Speed and brightness are adjustable
9	Seven-color jumpy changing		20	B/G crossfade	
10	Three-color gradual changing	Speed and brightness are adjustable	21	G/R crossfade	
11	Seven-color gradual changing				

6. Typical Application

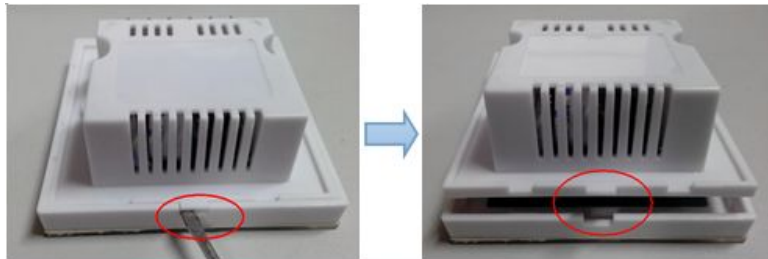


7. Installation Method



7.1 open the touch panel

① Use the screwdriver to gently pry the touch panel gaps, slowly move the panel, as shown in the figure below:



②Take the ribbon cable. Slowly open wiring seat lock, bottom line, as shown in the figure below:

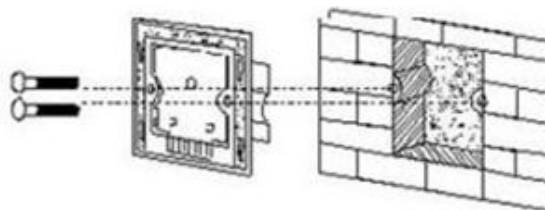


7.2 wiring

According to the typical application circuit to connect.

7.3 installation switch base

As shown in figure, after connecting line, install it in the cassette on the wall, Screw it to make it fixed on the wall, finally install the base on the wall.



7.4 cover touch panel

According to the step 1, connect row line, lock ribbon cable lock, cover panels

8. Remarks:

8.1, Connect the load wire at first, following by the power wire; Please ensure short circuit can not occur between connecting wire before you turn on the power;

8.2 Supply voltage range is DC12~24V, if beyond it, conyroller will be broken.